

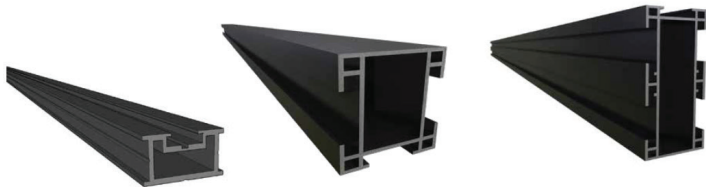
CLICKDECK[®]
MODULAR SUBFLOOR SYSTEM

PH: (03) 8202 5166
info@exolux.com.au
www.clickdeck.com.au

CLICKDECK Aluminium profiles

Typical residential spans

* See full span table for commercial spans



28PROFILE 28x50 55PROFILE 55x55 110PROFILE 110x50

2.5 Kpa / 1.8 PL - Standard Residential
(Standard loading - ~3 People per SQM)

JOIST SPACING: 450mm

JOISTS			28x50 - BEARER			55x55 - BEARER			110x50 - BEARER		
PROFILE	SPAN	CANTILEVER	JOIST SPAN	BEARER SPAN	CANTILEVER	JOIST SPAN	BEARER SPAN	CANTILEVER	JOIST SPAN	BEARER SPAN	CANTILEVER
28x50	600/700*	200	600	600/700*	200	600	1200/1200*	300	600	2400/2600*	500
55x55	1050/1200*	300	1000	550/650*	200	1000	1150/1200*	300	1000	2150/2400*	500
110x50	1900/2100*	500	1200	550/650*	200	1200	1100/1200*	300	1200	2050/2200*	500
			1500	550/650*	150	1500	1050/1150*	250	1500	1900/1950*	400
			1900	550/650*	150	1900	950/1050*	250	1900	1700/1750*	400
			2100	500/650*	150	2100	950/1000*	200	2100	1600/1650*	400

- Minimum back span length to be 4 times of the overhang length
- *Continuous Span

Main components

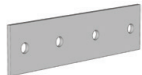
Corner bracket (Cornerbk-2)



Hold down Clip (HDC-25)



55P/110P Joiner



28P Joiner

Typical Joist to perimeter joist connection

28Profile

55Profile

110Profile

55Profile
Single Span - Both Sides
Continuous Span - Alternating sides

110Profile
Single Span - Both Sides
Continuous Span - Both Sides

28Profile

55Profile

110Profile

