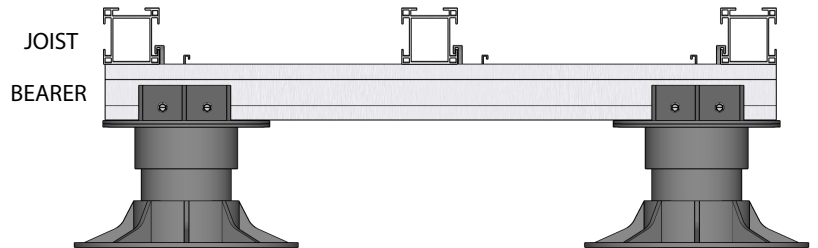
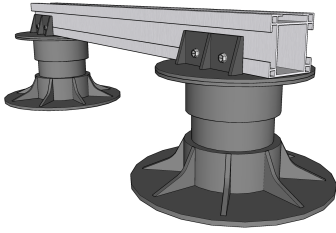


Aluminium Profile Information

Ensure **FLAT** side of profile is facing down for both bearers and joists.

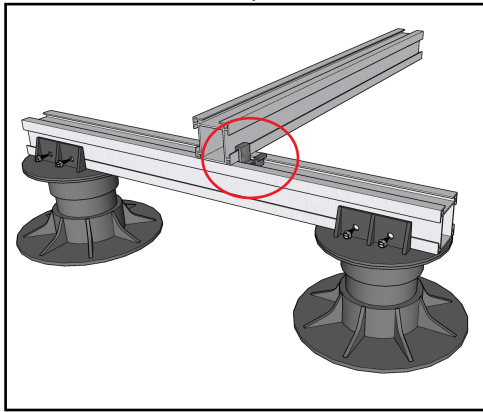


HOLD DOWN CLIPS

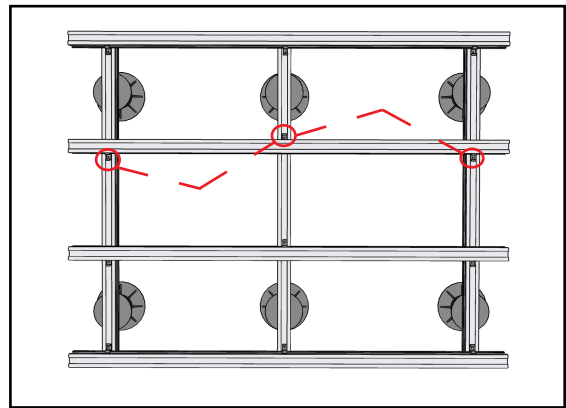
These are used to fix the Joists to the Bearers
1 Hex Screws needed per clip.



Screw the hold down clip into bearer (as shown)



Install in alternating sides of joist

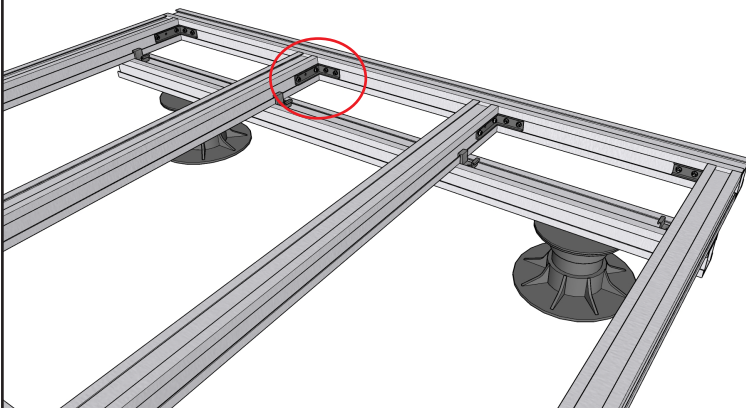
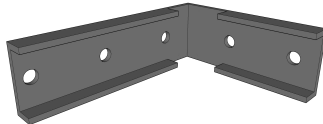


CORNER BRACKET

Applications:

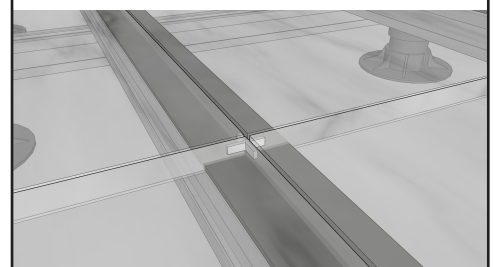
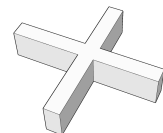
1. Make 90 degree angle joins with the profiles.
2. Make vertical join (for fascia bracket support).
3. Can also be bent to make your desired angled join.

4 Hex Screws needed per bracket.



TILE SPACERS

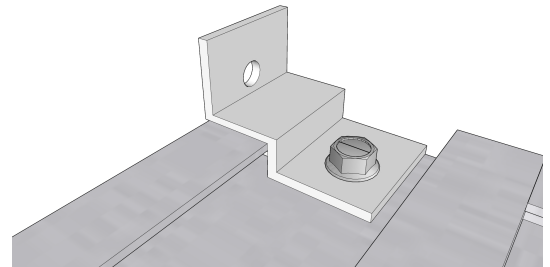
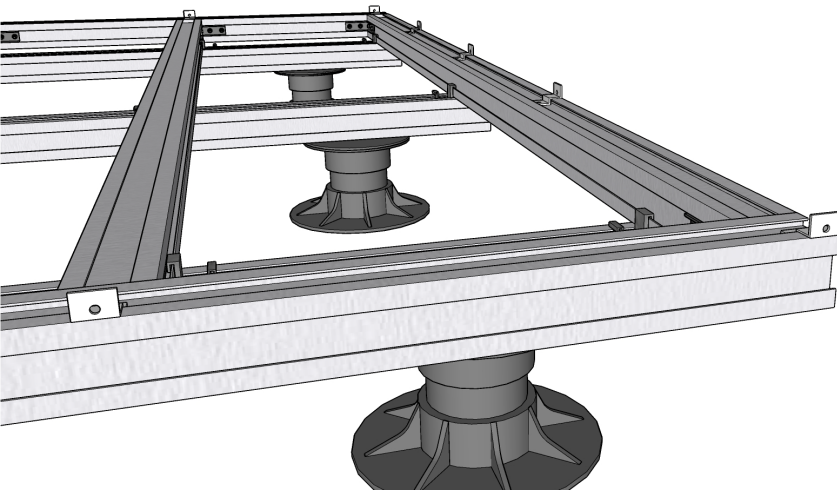
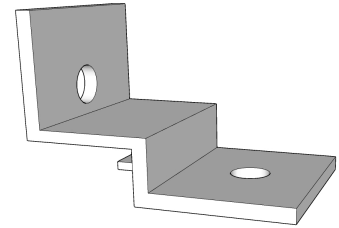
Tile spacers are used at the intersections of the pavers to keep a uniform spacing.



TILE RETAINER CLIP

Tile retainer clips are used to ensure tiles/pavers are firmly kept from sliding and moving off the frame.

These are used typically at each intersection of pavers along the perimeter of the frame, they can also be used internally to further reduce any movement.

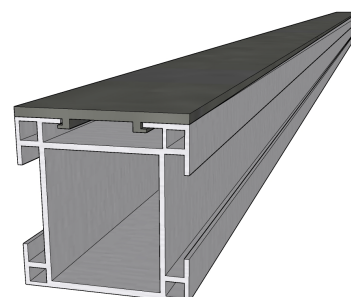
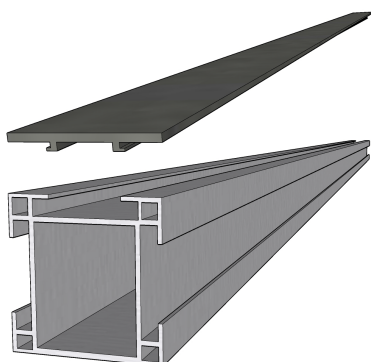


RUBBER TILE STRIP

For all installations where tiles/pavers are laid on the clickdeck system, our rubber tile strip is used to provide a non slip surface and noise barrier between the aluminium and pavers.

This simply press fits into the recessed channel as show below.

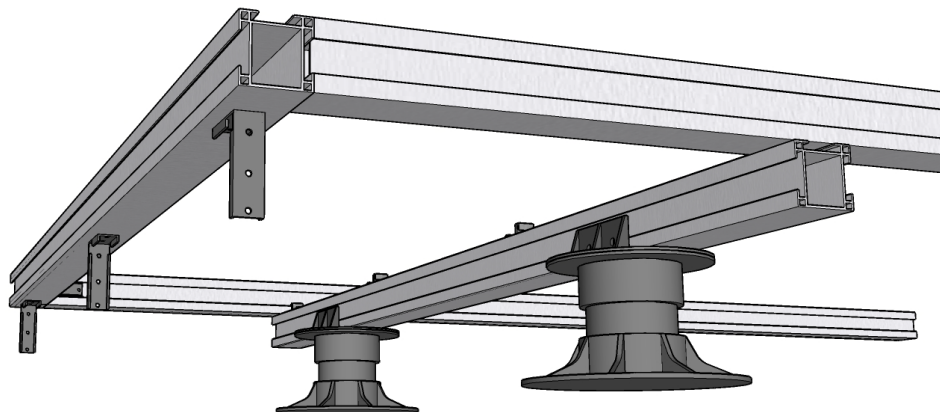
This is inserted for all joists and perimeter joists .



Fascia support for tiles/pavers

Attach corner brackets to underside of perimeter joists and external joists.

Tip: If building a low height deck, attach your brackets before assembling frame system.



Cut the desired length of 55mm profile to create the fascia support, you can then attach tile retaining clips to assist the weight of the tile.

These tiles must be glued using tile adhesive.

